

Installing Firebird

The instructions given below for the installation of Firebird on Windows and Linux should be sufficient for the vast majority of cases. However, if you experience problems or if you have special needs not covered here, be sure to read the [Installation notes](#) chapter in the [Release Notes](#). This is especially important if you are upgrading from a previous version or if there are remnants of an old (and maybe long gone) InterBase® or Firebird installation floating around your system (DLLs, Registry entries, environment variables...)

Installing the Firebird server

Installation drives

Firebird server – and any databases you create or connect to – must reside on a hard drive that is physically connected to the host machine. You cannot locate components of the server, or any database, on a mapped drive, a file system share or a network file system.

Note: You can mount a read-only database on a CD-ROM drive but you cannot run Firebird server from one.

Installation script or program

Although it is possible to install Firebird by a file system copying method – such as “untarring” a snapshot build or decompressing a structured `.zip` archive – it is strongly recommended that you use the distributed release kit (`.exe` for Windows, `.rpm` for Linux), especially if this is the first time you install Firebird. The Windows installation executable, the Linux rpm program and the `install.sh` script in the official `.tar.gz` for various Posix platforms all perform some essential setup tasks. Provided you follow the installation instructions correctly, there should be nothing for you to do upon completion but log in and go!

Installing on Windows

The Firebird installer lets you choose between [Superserver](#) and [Classic/Superclassic](#). Each model is fully stable and there is no reason to categorically prefer one to the other. Of course you may have your own specific considerations. When in doubt, consult the [Classic, Superclassic or Superserver](#) chapter again.

If you install Firebird under Windows 95/98/ME, uncheck the option to install the *Control Panel* applet. It doesn't work on these platforms. You'll find a link to a usable applet further down. (*Note:* the option to install the applet is only available for Superserver.)

On Windows server platforms – NT, 2000/3/8, XP, Vista and 7 – Firebird will run as a system service by default, but during the installation you can also choose to let it run as an application. Non-server

Windows systems – 95, 98 and ME – don't support services; running as an application is the only option there.

Use the Guardian?

The [Firebird Guardian](#) is a utility that monitors the server process and tries to restart it if it terminates abnormally. The Guardian does not work with Firebird Classic Server on Windows if run as an application. This is due to a known bug, which may be fixed later. Currently the Firebird 2.5 installer doesn't give you the option to include the Guardian at all with a Classic Server, even if you install it as a service.

The Guardian works correctly with Superserver, whether run as an application or as a service.

If you run Firebird as a service on Windows 2000 or newer, the Guardian is a convenience rather than a necessity, since these operating systems have the facility to watch and restart services. It is recommended that you keep the Guardian option on (if possible) in all other situations.

[back to top of page](#)

Installing on Linux and other Unix-like platforms

In all cases, read the [Release Notes](#) that came with your Firebird package (chapter [Installation notes](#) , section [Posix Platforms](#)). There may be significant variations from release to release of any Posix operating system, especially the open source ones. Where possible, the build engineers for each Firebird version have attempted to document any known issues.

If you have a Linux distribution that supports rpm installs, consult the appropriate platform documentation for instructions about using RPM Package Manager. In most distributions you will have the choice of performing the install from a command shell or through a GUI interface.

For Linux distributions that cannot process rpm programs, and for Unix flavours for which no `.rpm` kit is provided, use the `.tar.gz` kit. You will find detailed instructions in the [Release Notes](#).

Shell scripts have been provided. In some cases, the [Release Notes](#) may instruct you to edit the scripts and make some manual adjustments.

[back to top of page](#)

Installing multiple servers

Firebird allows the operation of [multiple servers](#) on a single machine. It can also run concurrently with Firebird 1.x or InterBase® servers. Setting this up is not a beginner's task though. If you need to run multiple servers, consult the [Installation Notes](#) chapter of the [Release Notes](#), and have the *Firebird 1.5 Release Notes* handy too – you will be directed to them at a certain point during your reading of the Installation Notes.

Testing your installation

If everything works as designed, the Firebird server process will be running on your server machine upon completion of the installation. It will also start up automatically whenever you restart your computer.

Before testing the Firebird server itself, it is advisable to verify if the server machine is reachable from the client at all. At this point, it is assumed that you will use the recommended TCP/IP network protocol for your Firebird client/server connections.

Notes:

- If you have installed a Classic/Superclassic Server on Linux/Unix or any Firebird server on Windows, it is possible to connect directly to the local server, without using a network layer. If you intend to use Firebird for this type of connection only, you can skip the [Pinging the server](#) section below.
- For information about using the NetBEUI protocol in an all-Windows environment, refer to the Network Configuration chapter in the Using Firebird manual sold by IBPhoenix, or consult the InterBase® 6 Operations Guide (<https://www.ibphoenix.com/files/60OpGuide.zip>).
- Firebird does not support IPX/SPX networks.

Pinging the server

The ping command – available on most systems – is a quick and easy way to see if you can connect to a server machine via the network. For example, if your server's IP address in the domain that is visible to your client is 192.13.14.1, go to a command shell on the client machine and type the command

```
ping 192.13.14.1
```

substituting this example IP address with the IP address that your server is broadcasting. If you are on a managed network and you don't know the server's IP address, ask your system administrator. Of course you can also ping the server by its name, if you know it:

```
ping vercingetorix
```

If you are connecting to the server from a local client – that is, a client running on the same machine as the server – you can ping the virtual TCP/IP loopback server:

```
ping localhost - or -ping 127.0.0.1
```

If you have a simple network of two machines linked by a crossover cable, you can set up your server with any IP address you like except 127.0.0.1 (which is reserved for a local loopback server) and, of course, the IP address which you are using for your client machine. If you know the “native” IP addresses of your network cards, and they are different, you can simply use those.

Once you have verified that the server machine is reachable from the client, you can go on to the next step.

Checking that the Firebird server is running

After installation, Firebird server should be running:

On Linux or other Unix-like systems:

As a service.

On Windows server systems (NT, 2000/3/8, XP, Vista, 7):

As a service or as an application. Service is default and highly recommended.

On Windows non-server systems (95, 98, ME):

As an application.

The following sections show you how to test the server in each of these situations.

[back to top of page](#)

Server check: Linux and other Unices

Use the `top` command in a command shell to inspect the running processes interactively. If a Firebird Superserver is running, you should see a process named `fbguard`. This is the `Guardian` process. Further, there will be one main and zero or more child processes named `fbserver`.

The following screen shows the output of `top`, restricted by `grep` to show only lines containing the characters `fb`:

```
frodo:/inkomend/firebird # top -b -n1 | grep fb
2587 firebird 24 0 1232 1232 1028 S 0.0 0.3 0:00.00 fbguard
2588 firebird 15 0 4124 4120 2092 S 0.0 0.9 0:00.04 fbserver
2589 firebird 15 0 4124 4120 2092 S 0.0 0.9 0:00.00 fbserver
2604 firebird 15 0 4124 4120 2092 S 0.0 0.9 0:00.00 fbserver
2605 firebird 15 0 4124 4120 2092 S 0.0 0.9 0:00.02 fbserver
2606 firebird 15 0 4124 4120 2092 S 0.0 0.9 0:00.00 fbserver
2607 firebird 15 0 4124 4120 2092 S 0.0 0.9 0:00.00 fbserver
```

As an alternative to `top`, you can use `ps -ax` or `ps -aux` and pipe the output to `grep`.

For `Classic Server`, the process name is `fb_inet_server`. There will be one instance of this process running for each network connection. Note that if there are no active connections, or if there are only direct local connections, you won't find `fb_inet_server` in the process list. `fb_lock_mgr` should be present though as soon as any kind of Classic connection has been established.

For `Superclassic`, the process name is `fb_smp_server` and it will be visible as soon as the service is started. Superclassic, just like `Superserver`, does its own port-listening, so it will be running even if there are no connections.

Other ways to test a Firebird server immediately after installation include [connecting to a database](#),

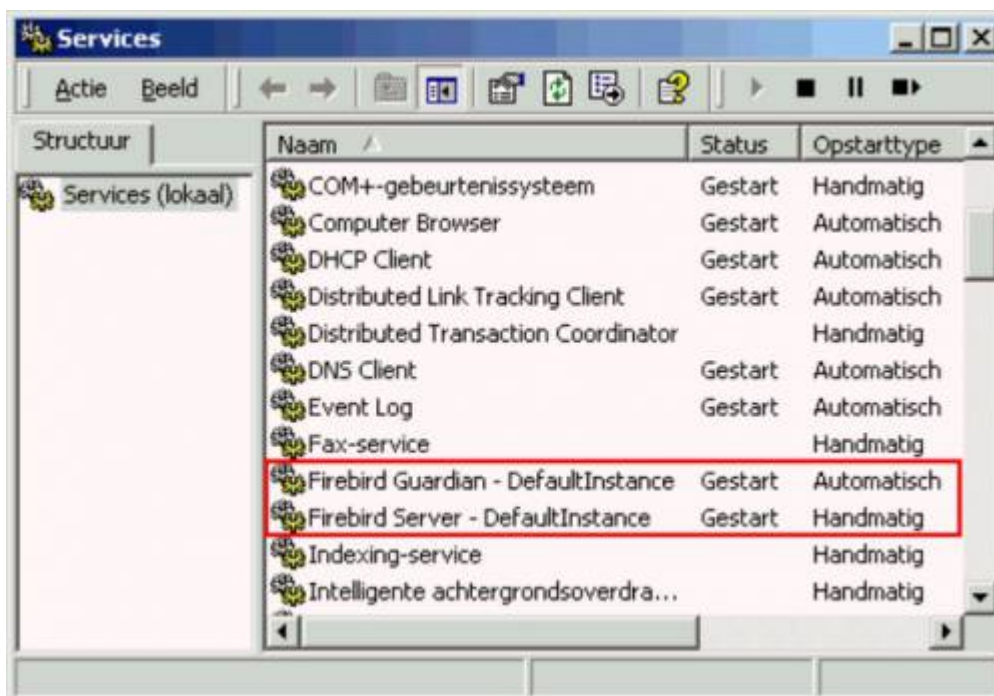
creating a database, and launching the [gsec](#) utility. All these operations are described later on in this guide.

[back to top of page](#)

Server check: Windows, running as service

Open *Control Panel* → *Services* (NT) or *Control Panel* → *Administrative Tools* → *Services* (2000/3/8, XP, Vista, 7).

This illustration shows the Services applet display on Windows 2000. The appearance may vary from one Windows server edition to another. Also, service names may vary with the Firebird version.



You should at least find the Firebird server in the Services listing. The Guardian may or may not be running, depending on the choices you made during installation.

[back to top of page](#)

Server check: Windows, running as application

If Firebird is up and running as an application, it is represented by an icon in the system tray:

- A green and grey server symbol if controlled by the Guardian;
- A round yellow and black graphic if running standalone.

A flashing icon indicates that the server is in the process of starting up (or at least trying to do so). A red icon, or an icon with an overlying red stop sign, indicates that startup has failed.

One way to make 100% sure if the server is running or not is to press [Ctrl + Alt + Del] and look for the [fbserver](#) or [fb_inet_server](#) process (and possibly [fbguard](#)) in the task list.

On some occasions, you may need to start the Guardian or server once explicitly via the Start menu even if you opted for Start Firebird now at the end of the installation process. Sometimes a reboot is necessary.

If you're desperately trying to start Firebird and nothing seems to work, ask yourself if you've installed Firebird 2.5 (Super)Classic server with the Guardian option enabled (the installation program doesn't offer this possibility anymore, but there are other ways). As said before, the combination (Super) Classic + Guardian currently doesn't work if Firebird runs as an application. Uninstall Firebird if necessary and reinstall (Super)Classic *without* Guardian, or Superserver with or without Guardian.

You can shut the server down via the menu that appears if you right-click on the tray icon. Notice that this also makes the icon disappear; you can restart Firebird via the Start menu.

Note: Windows Classic Server (but not Superclassic!) launches a new process for every connection, so the number of `fb_inet_server` processes will always equal the number of client connections plus one. Shutdown via the tray icon menu only terminates the first process (the *listener*). Other processes, if present, will continue to function normally, each terminating when the client disconnects from the database. Of course, once the listener has been shut down, new connections can't be made.

In the case of Superserver you can also use a *Control Panel* applet to check and alter the Firebird server status. Some available applets will be presented a little later in this guide.

[back to top of page](#)

Performing a client-only install

Each remote client machine needs to have the client library - `libfbclient.so` on Posix clients, `fbclient.dll` on Windows clients - that matches the release version of the Firebird server.

Firebird versions from 1.5 onward can install symlinks or copies named after the 1.0 libs (with the "old" InterBase® names), to maintain compatibility with third-party products which need these files.

Some extra pieces are also needed for the client-only install.

Windows

At present, no separate installation program is available to install only the client pieces on a Windows machine. If you are in the common situation of running Windows clients to a Linux or other Unix-like Firebird server (or another Windows machine), you need to download the full Windows installation kit that corresponds to the version of Firebird server you install on your server machine.

Fortunately, once you have the kit, the Windows client-only install is easy to do. Just run the installation program, and when you arrive at the *Select Components* screen, choose one of the client-only options from the dropdown list or uncheck the *Server Components* checkbox.

Linux and some other Posix clients

A small-footprint client install program for Linux clients is not available either. Additionally, some Posix flavours - even within the Linux constellation - have somewhat idiosyncratic requirements for file system locations. For these reasons, not all *x distributions for Firebird even contain a client-only install option.

For most Linux flavours, the following procedure is suggested for a Firebird client-only install. Log in as root for this.

1. Look for `libfbclient.so.2.5.n` (n being the patch version number) in `/opt/firebird/lib` on the machine where the Firebird server is installed. Copy it to `/usr/lib` on the client (or `/usr/lib64` if both server and client are 64-bits).

2. Create chained symlinks using the following commands:

```
ln -s /usr/lib/libfbclient.so.2.5.n /usr/lib/libfbclient.so.2
ln -s /usr/lib/libfbclient.so.2 /usr/lib/libfbclient.so
```

...replacing 2.5.n with your version number, e.g. 2.5.0 or 2.5.3

If you're running applications that expect the legacy libraries to be present, also create the following symlinks:

```
ln -s /usr/lib/libfbclient.so /usr/lib/libgds.so.0
ln -s /usr/lib/libfbclient.so /usr/lib/libgds.so
```

3. Copy `firebird.msg` to the client machine, preferably into the `/opt/firebird` directory. If you place it somewhere else, create a system-wide permanent `FIREBIRD` environment variable pointing to the right directory, so that the `API` routines can locate the messages.

4. Optionally copy some of the Firebird command-line tools - e.g. `isql` - to the client machine. Note: always copy the tools from a Superserver kit, regardless of the architecture of the server(s) you're planning to connect to. Tools from Classic distributions terminate immediately if they can't find the `libfbembed` library (which is useless for network connections) upon program start.

Instead of copying the files from a server, you can also pull them out of a Firebird `tar.gz` kit. Everything you need is located in the `/opt/firebird` tree within the `buildroot.tar.gz` archive that's packed inside the kit.

From:
<http://ibexpert.com/docu/> - **IBExpert**

Permanent link:
<http://ibexpert.com/docu/doku.php?id=01-documentation:01-08-firebird-documentation:firebird-2.5-guide:installing-firebird>

Last update: **2023/07/12 02:53**

