

How to change a forgotten password

(1) To change your password if it is incorrect or forgotten, first access the IBEExpert download center from [here](#) and click on the Login button.



(2) Now that you are on the Login Page, click on the Recover Your Password button.

Login to your Account

You already have an account for the downloadcenter? Please enter your UserID or E-Mail as username and the given password here.

Don't have an account yet? [Register New Account](#)

Forgot your password? [Recover your password](#)

(3) A new window will open asking you to enter your email address. Make sure that the email address you enter is the one with the account registered with the IBEExpert Download Center. Click on the Recover Your Password Button.

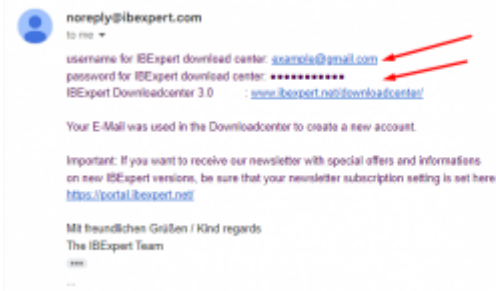
Forgot Password?

To receive a new password, enter your email address below.

RECOVER YOUR PASSWORD

CANCEL

(4) If you entered the email address correctly, you will receive an email from noreply@ibexpert.com. The email which is sent will have both your username and your password for the IBEExpert Download Center. If you did not receive the password please check your spam folder



Change User Information Once Logged in to the Download Center

Changing user information. To change your personal User data information, like address, and contact details, you can click on the Edit Data button at the end of the User Data Panel. Once you alter your details, click on the Green Save Button next to it, to save your changes.

User data

Email
mzammit@ibexpert.info

Name
Max Zammit

Company
IBExpert Ltd

Street+No.
22 Triq ir-rabat

Zip+City
Marsalforn

Country
Malta

Phone

VAT ID

Comments

Please send me an E-Mail when a new IBExpert version is available

Please send me the Lazarus Newsletter

[EDIT DATA](#) [CHANGE PASSWORD](#)

[YEAR EDITION](#)

Change Your Password Once Logged in to the Download Center

(1) You can change your password by pressing the Change Password button which can be found in the User data panel.

User data

Email

mzammit@ibexpert.info

Name

Max Zammit

Company

IBExpert Ltd

Street+No.

22 Triq ir-rabat

Zip+City

Marsalforn

Country

Malta

Phone

VAT ID

Comments

Please send me an E-Mail when a new IBExpert version is available

Please send me the Lazarus Newsletter

EDIT DATA

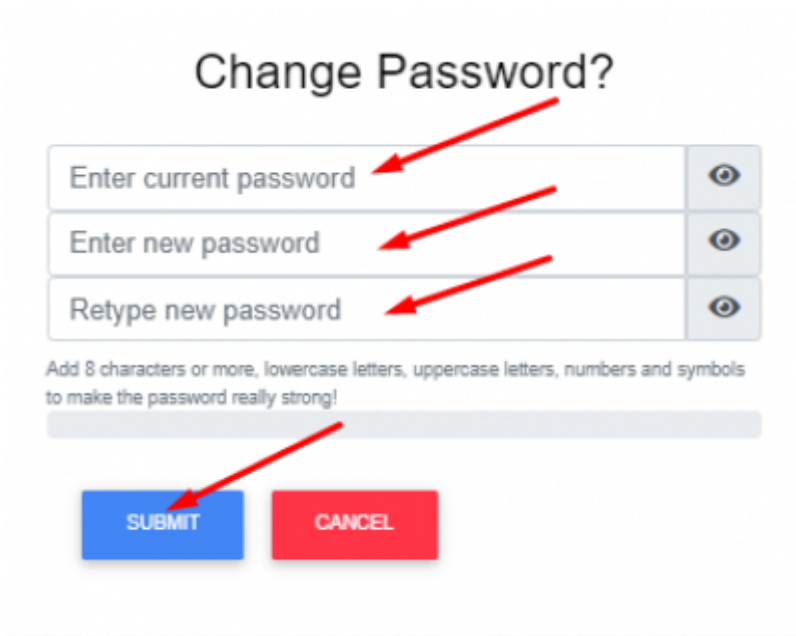
CHANGE PASSWORD

YEAR EDITION

(2) A new window will open and will ask you to enter your current password and a new password. The following guidelines must be followed while entering your new password.

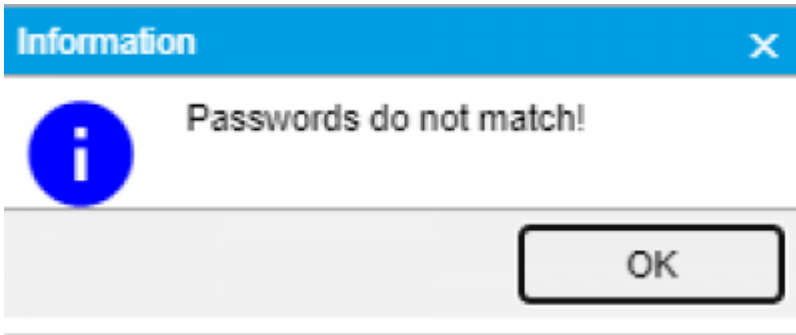
- Minimum length: 8 characters
- Maximum length: 64 characters
- The following special characters are **not allowed**: ?, # | and space bar

Enter the password for a second time to confirm it and click on the Submit button after

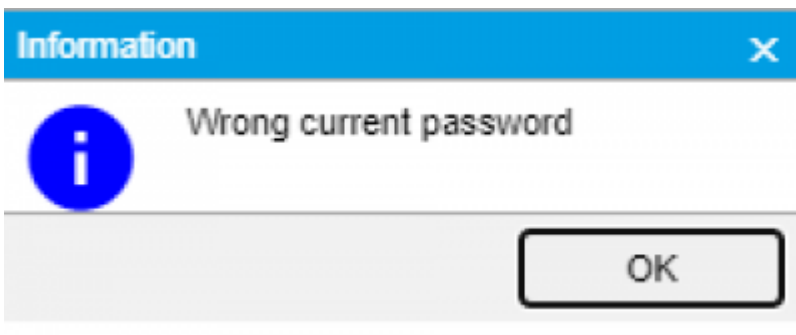


The screenshot shows a form titled "Change Password?". It contains three input fields: "Enter current password", "Enter new password", and "Retype new password". Each field has a red arrow pointing to it. To the right of each field is an eye icon for toggling visibility. Below the fields is a text box with the instruction: "Add 8 characters or more, lowercase letters, uppercase letters, numbers and symbols to make the password really strong!". At the bottom are two buttons: a blue "SUBMIT" button and a red "CANCEL" button. A red arrow points to the "SUBMIT" button.

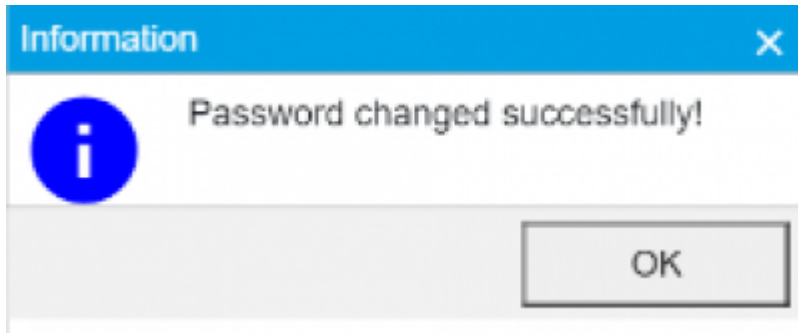
(3) If your passwords do not match, then the following error message will appear. Make sure that both your new passwords match and try again.



(4) If you entered your original password incorrectly, the following error message will pop up. If you would like to change your current password,



(5) If you entered all the information correctly, then your password will be changed successfully and the following message will pop up.



From:
<http://ibexpert.com/docu/> - **IBExpert**

Permanent link:
<http://ibexpert.com/docu/doku.php?id=02-ibexpert:02-03-change-password>

Last update: **2023/02/04 18:47**

