

# IBExpert Grid Menu

The IBExpert Grid menu item includes the following menu items:

- [Apply Best Fit](#)
- [Save Grid Data](#)
- [Copy Current Record to Clipboard](#)
- [Copy All to Clipboard](#)

It is of course necessary to be in an active grid (e.g. [Table Editor / Data](#) page, [View Editor / Data](#) page, [SQL Editor / Results](#) page etc.) for any of these menu items to be effective!

## Apply Best Fit

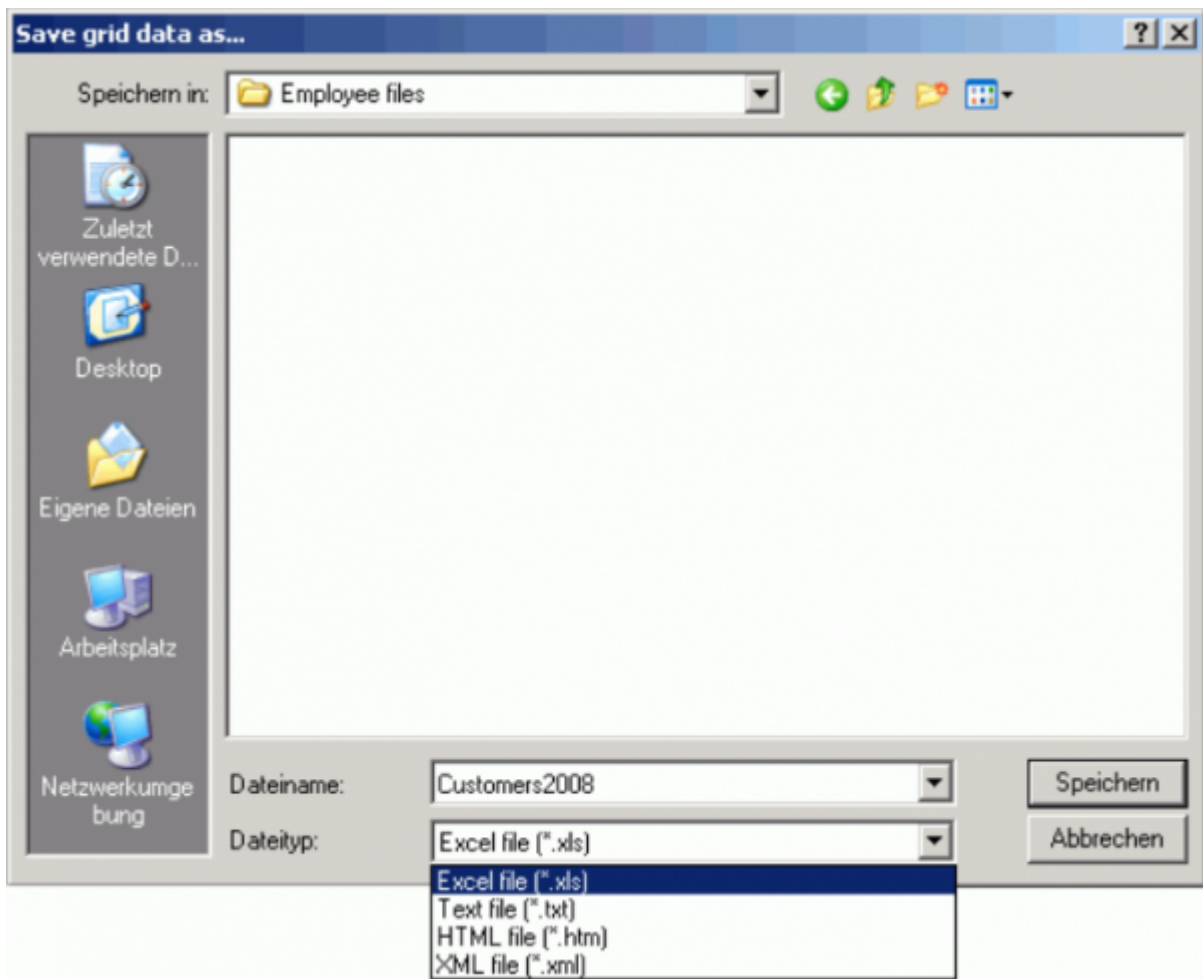
The IBExpert menu item *Apply Best Fit* can be started from the *Grid* menu, or using the key combination [Ctrl + (NumBlock +)].

This automatically adjusts all grid columns to the ideal width.

## Save Grid Data

The IBExpert menu item *Save Grid Data* as can be started from the *Grid* menu, or using the key combination [Shift + Ctrl + S].

It opens the *Save Grid Data As...* window:



It is possible to save grid data into TXT, XLS, HTML or XML formats. This works only with dataset grids (field and index grids in the [Table Editor](#) and the parameters/variables grid in the [Stored Procedure Editor](#) while working in [lazy mode](#)), and doesn't work with [SQL Assistant](#) lists, the constraint list in the [Table Editor](#) etc.

## Copy Current Record to Clipboard/Copy All to Clipboard

The IBExpert menu items *Copy Current Record to Clipboard* and *Copy All to Clipboard* can be started from the Grid menu, and used to copy either one selected record or all records (including column captions) in an active grid to clipboard. The values are delimited with the tab character.

From:  
<http://ibexpert.com/docu/> - IBExpert

Permanent link:  
<http://ibexpert.com/docu/doku.php?id=02-ibexpert:02-05-ibexpert-grid-menu>

Last update: **2023/09/24 13:56**

