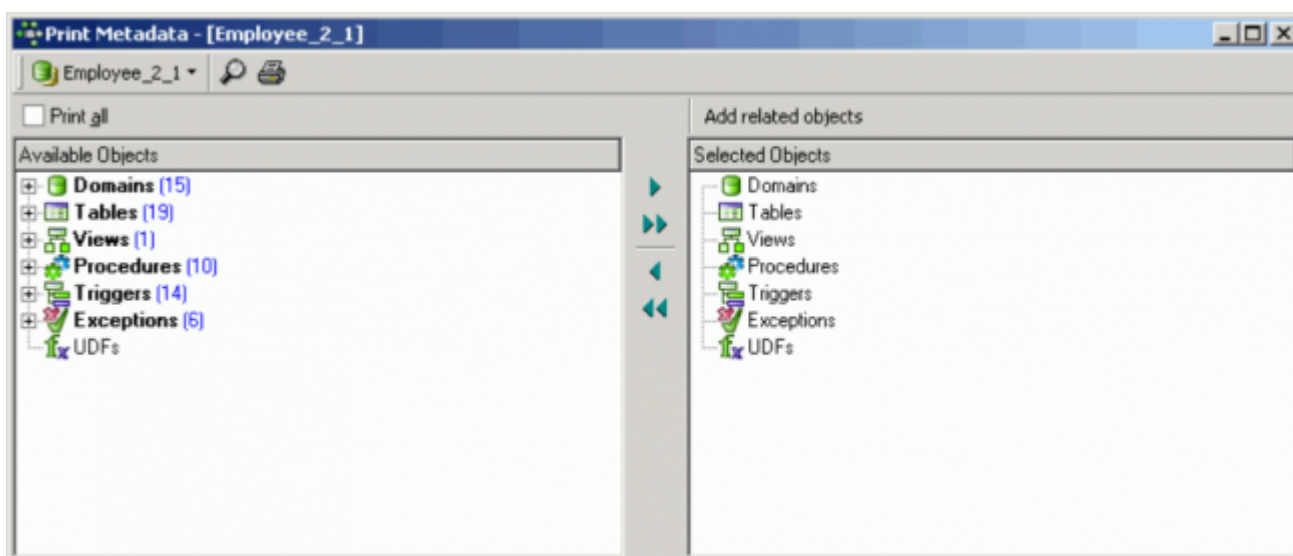


Print Metadata

Print Metadata prints the database [metadata](#), along with [dependencies](#), [description](#), and other options for any [database object](#) or object group, providing a quick and yet extremely comprehensive database documentation. The information is printed as a report, using IBEExpert's report templates. Using the [Report Manager](#), these reports can also be customized (the *Print Metadata* standard report templates can be found in the IBEExpert\Reports\ directory). This is of particular importance for those businesses working according to DIN certification/ISO standards. This feature is unfortunately not included in the [free IBEExpert Personal Edition](#).

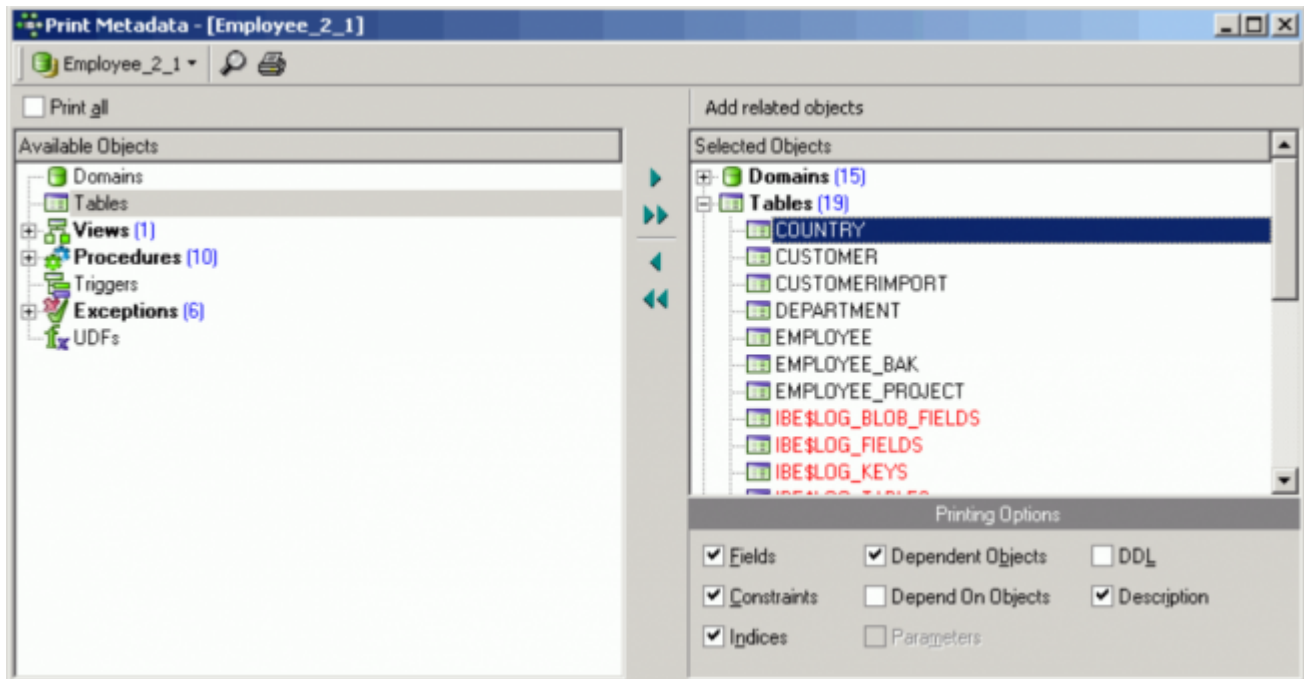
The *Print Metadata* menu item can be found in the [IBEExpert Tools menu](#), or started using the Printer icon in the [Tools toolbar](#).



The *Print Metadata Editor* is similar to the [Extract Metadata Editor](#). First select one of the registered [databases](#) using the top left toolbar button. Then select the objects to be printed. It is possible to check *Print All*, or specify individual [database objects](#) (using the < or > buttons, drag 'n' dropping the object names or double-clicking on them), or object groups (using the « or » buttons, drag 'n' dropping the object headings or double-clicking on them). Multiple objects can be selected using the [Ctrl] or [Shift] keys.

There is even the option to *Add Related Objects* by using the button above the *Selected Objects* window.

When one of the selected database objects or object groups is highlighted, a number of check options appear in the lower right panel. These include:



- [fields](#)
- [constraints](#)
- [indices](#)
- dependent objects
- depend on objects
- parameters
- [DDL](#)
- [description](#)

It is possible to specify that all DDL text be printed in black by simply specifying a black foreground for the respective global option (Standard) found in the [IBExpert Options menu item, Editor Options / Color](#).

In order to print a complete database documentation it is of course necessary to select all database objects (*Print all*). This could however lead to difficulties in the case of very large databases, despite the Report Manager's amazing speed!

It is possible to print the report directly from this dialog or preview it first, using the *Magnifying Glass* icon.

Date / Time: 26 November 2008 User: SYSDBA
 Database: C:\FB3021\EMPLOYEE.FDB Table: COUNTRY

Table: COUNTRY

Fields

Name	Type	Domain	Not Null
COUNTRY	VARCHAR(15)	COUNTRYNAME	NOT NULL
CURRENCY	VARCHAR(10)	RDB\$1	NOT NULL

Constraints

Constraint Name	Type	On Field
INTEG_2	Primary Key	COUNTRY

Indices

Index Name	On Field	Unique	Active	Sorting
RDB\$PRIMARY1	COUNTRY	Yes	Yes	Ascending

Description

Page 4 of 53

This opens the *Fast Report Preview* page, which displays the report as it will be printed, and furthermore offers options such as editing, saving the report to file and searching for text.

Full documentation can be found at the Fast Reports Inc. website:
<https://fast-report.com/en/download/fast-report-4-download.html>.

From:
<http://ibexpert.com/docu/> - **IBExpert**

Permanent link:
<http://ibexpert.com/docu/doku.php?id=02-ibexpert:02-08-ibexpert-tools-menu:print-metadata>

Last update: **2023/10/06 18:31**

