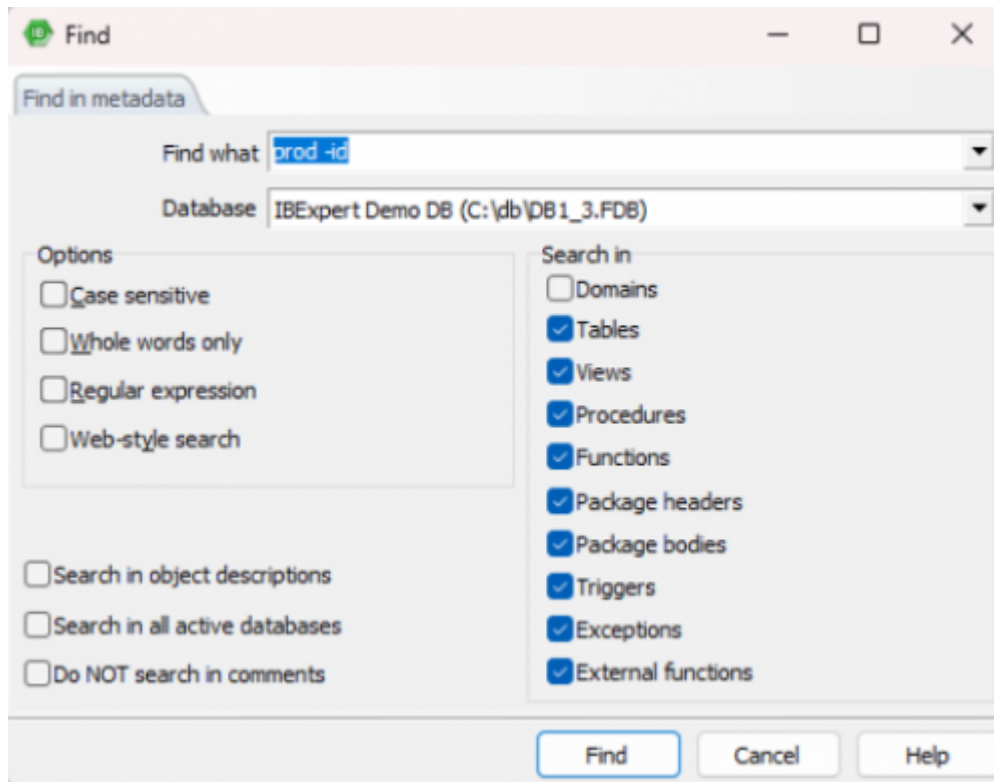


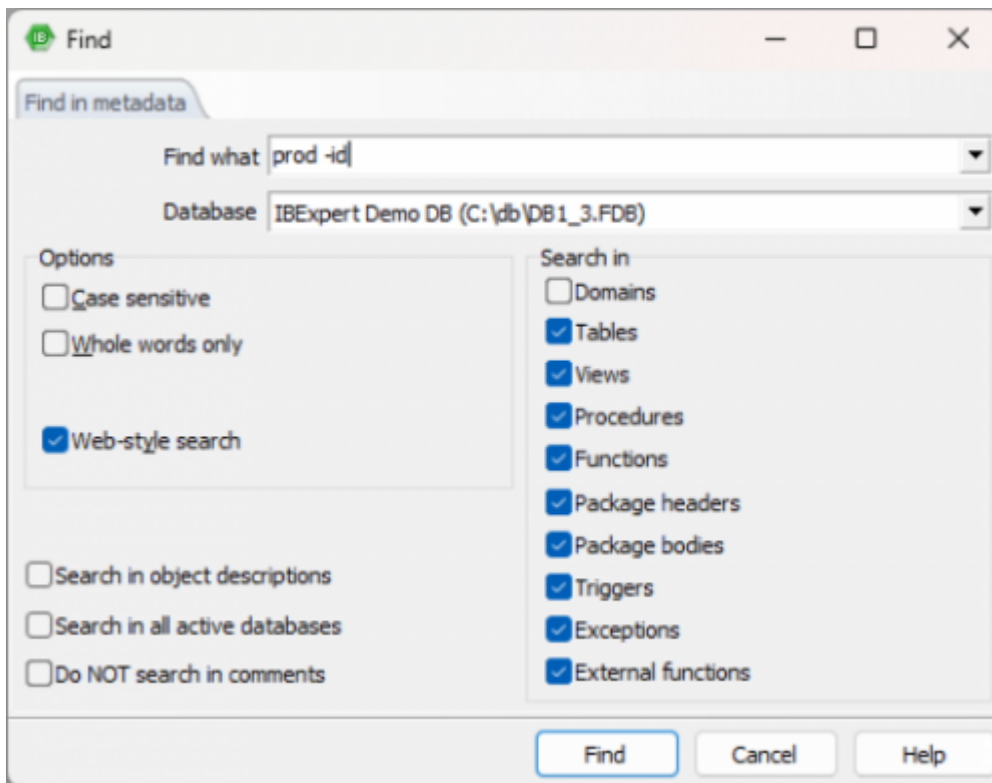
Search in Metadata

The Search in Metadata option can be found in the [IBExpert Tools menu](#), using the respective icon in the [Tools toolbar](#), or started using the key combination [Shift + Alt + F]. It is identical to the [Edit menu's Find](#) option - [Find in Metadata page](#).

This option is useful for finding individual words/digits or word/digit strings in [metadata](#) and in object descriptions. It even searches for and displays [field](#) names, as opposed to the [DB Explorer](#) filter, which only searches for object names. The *Find Metadata* dialog offers a number of options:



As you can see below, choosing **Web-style search** will make a regular expression unavailable and hidden:



Web-style search was implemented in IBExpert version 2022.11.14.

Here the user can specify what he is looking for; the drop-down list displays previous search criteria. A single active database may be selected from the second list; alternatively, the Search in all Active Databases option can be checked, in the bottom left-hand corner of the dialog.

Further Search options include:

- **Case sensitive:** differentiates between upper and lower case.
- **Whole words only:** as opposed to whole or parts of words.
- **Regular Expression:** recognizes [regular expressions](#) in the search string.
- **Web-style search:** simple web-style search (more info [below](#)).
- **Search in:** determines which object types should be searched - [domains](#), [tables](#), [views](#), [stored procedures](#), [triggers](#), [exceptions](#), [UDFs](#).

You can refine the search area by activating/deactivating the following check-box options:

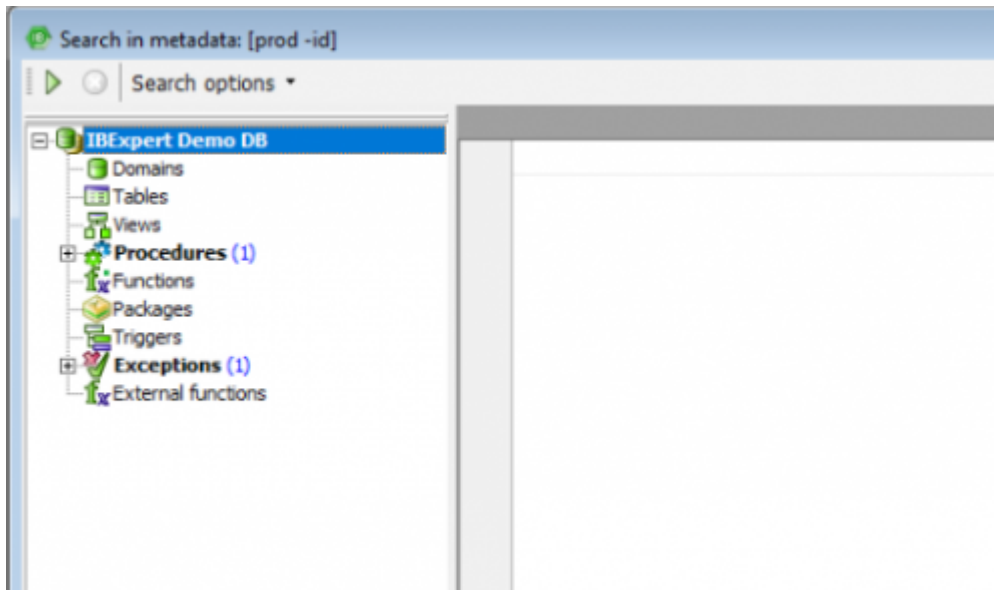
- Search in object descriptions.
- Search in all active databases.
- Do NOT search in comments.

Simple **web-style search** in the metadata search has specific rules. These rules are:

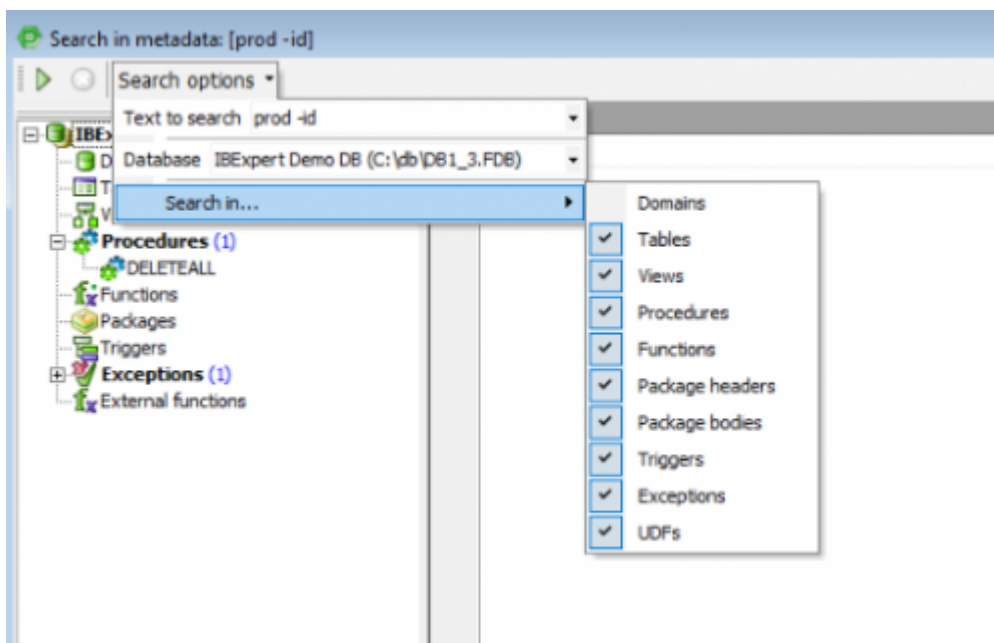
- By default, AND condition is used: 'declare variable' will find all DDL's that contain both 'declare' and 'variable'
- To use OR place '|' between words: 'declare | variable'
- OR has lower priority than AND
- To exclude words from a search use '-' before a word (without a space): 'declare -variable - procedure'
- To search for an exact match put a word or phrase inside quotes: "declare variable"

- Complex expressions with parentheses are not supported
- 'Whole words' and 'Case sensitive' options are taken into account

After clicking on the *Find* button, a new *Search* dialog is opened:

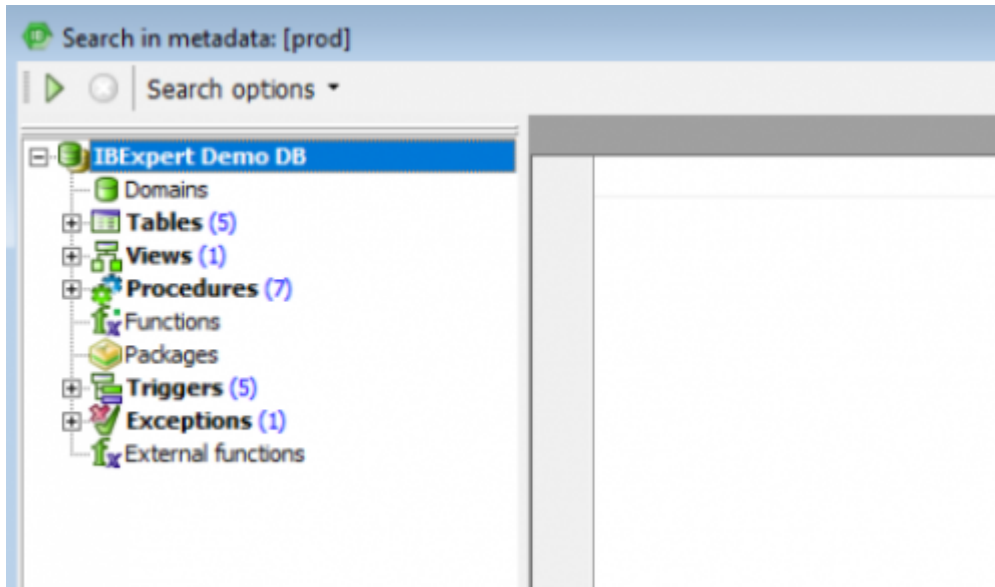


The *Search Options* button in the toolbar can be used to restart the *Find* dialog, in order to specify new *Search* conditions. The arrow to the right of this produces a drop-down overview of the search criteria specified.

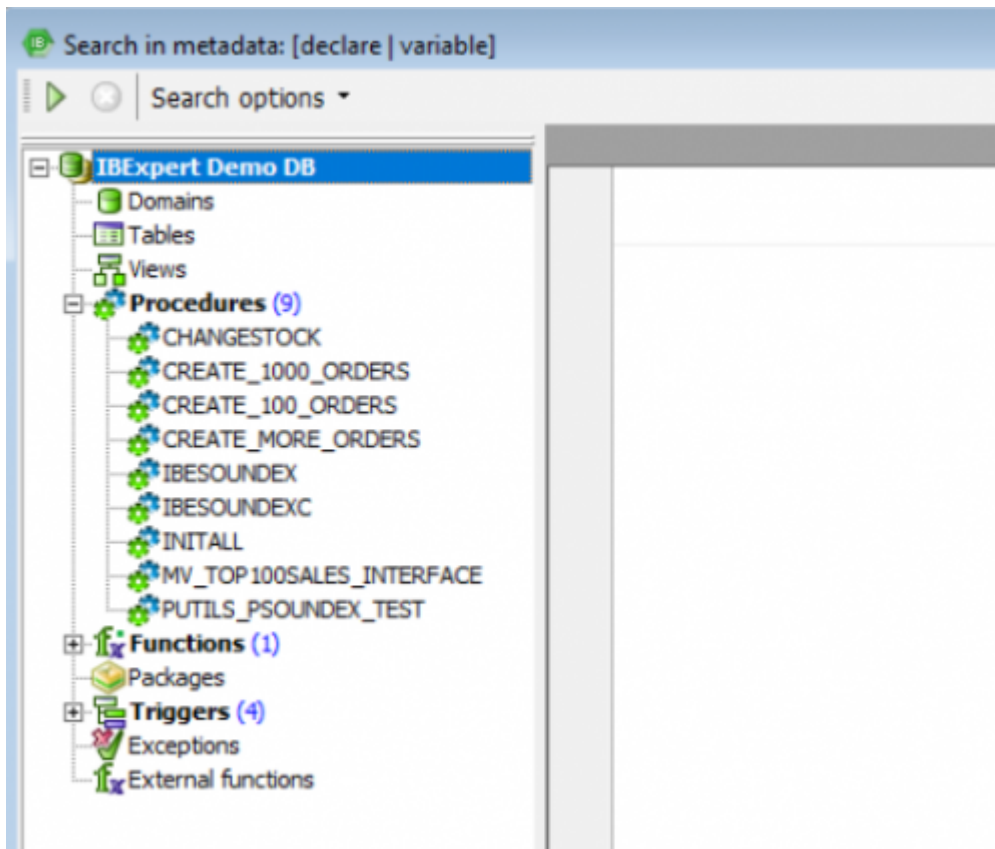


The results of the Metadata Search are displayed in the usual IBExpert tree form, sorted by [database object](#) type. By double-clicking on an object, the object editor is opened.

In example above, the word "id" was excluded from a search, so '-' was used before a word to exclude it. If you want to search for example only for "prod", you would get the following:



Another example, such as searching for the words 'declare' or 'variable' will return the following:



From:
<http://ibexpert.com/docu/> - **IBExpert**

Permanent link:
<http://ibexpert.com/docu/doku.php?id=02-ibexpert:02-08-ibexpert-tools-menu:search-in-metadataata>

Last update: **2023/10/02 10:00**

