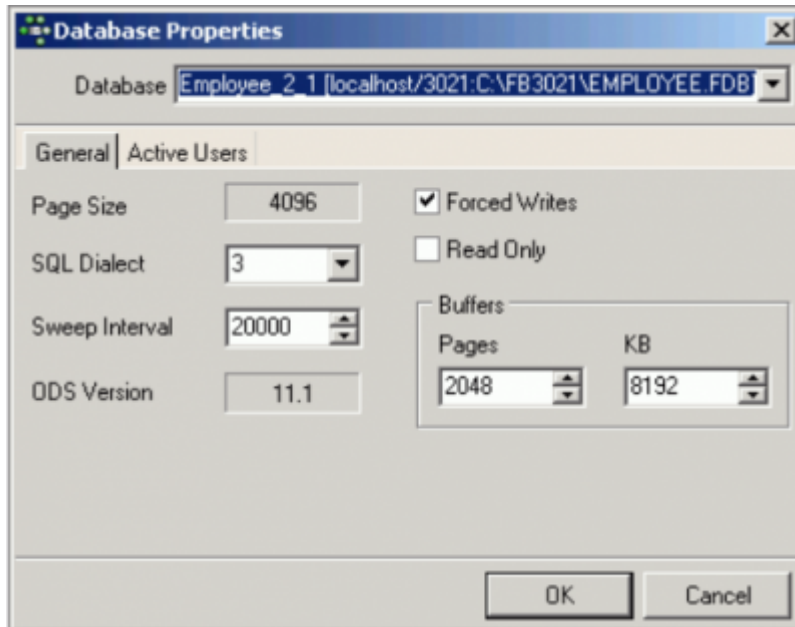


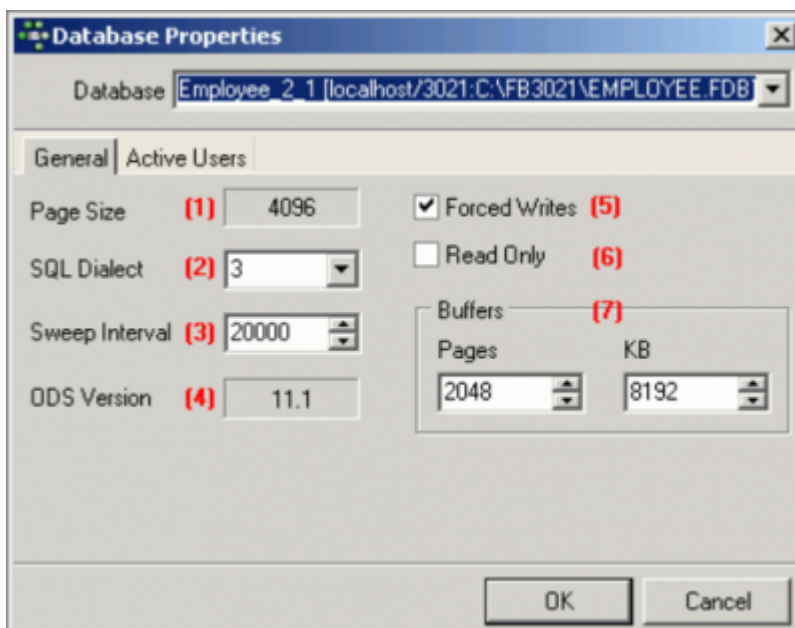
# Database Properties

The Database Properties Editor can be started from the [IBExpert Services menu](#). It can be used to specify certain database properties and view other properties appertaining to the database specified in the Database drop-down list (in the upper part of the editor).



There are two tabs labeling the [General page](#) and the [Active Users page](#).

## General page



The *General page* displays the following information for the selected database:

**(1) Page Size:** displays the current specified [page size](#). The page size can only be altered by

performing a [database backup](#) followed by a restore (**IBExpert menu:** [Services / Backup Database](#) and [Services / Restore Database](#)) and redefining the database page size.

**(2) SQL Dialect:** shows which [SQL dialect](#) was specified at the time of [database registration](#). This may be altered here, if wished (although watch out for possible dialect incongruencies, for example, the different [DATE](#) and [TIME](#) data types).

**(3) Sweep Interval:** This displays the number of [transactions](#) which may be made in the database before an automatic [garbage collection](#) is executed by Firebird/InterBase®. If this number is specified at zero (0) it is not performed automatically at all. It could then be carried out, for example, at night as a sweep or backup using [GFIX](#) and the at [Windows command](#) or the [Linux chron](#) command. Please refer to [Database sweep](#) for further information.

**(4) ODS Version:** The [ODS \(= On-Disk Structure\)](#) version shows with which database version the database was created, e.g. InterBase® 5 = ODS version 9, InterBase® 6 = ODS version 10.0, InterBase® 6.5 = ODS version 10.1, InterBase® 7 = ODS version 11. Firebird versions start at ODS version 10.0.

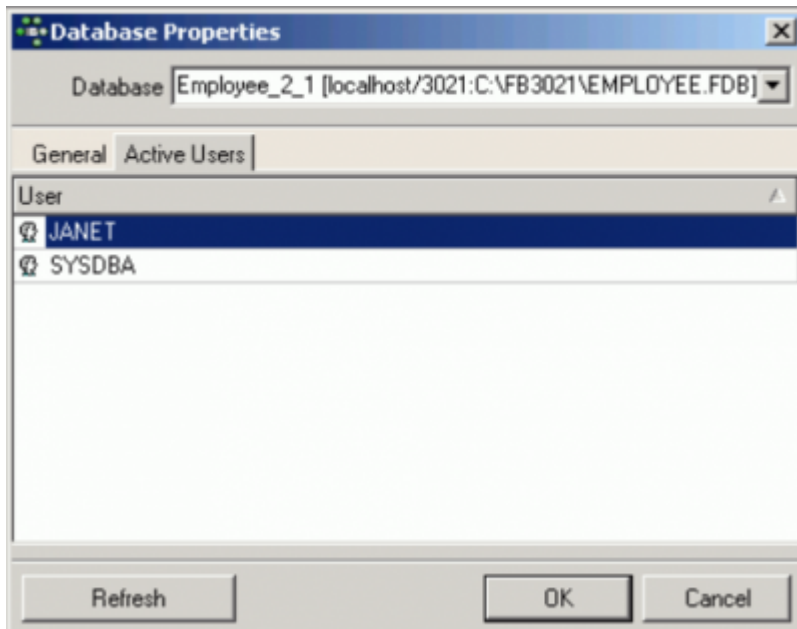
**(5) Forced Writes:** This enables the forced writing onto disk mode when committing. Please refer to [Forced writes](#) for further information.

**(6) Read Only:** A database can be set to *Read Only* when, for example, saving the database onto a CD, or in the case of a reference or archive database. The Read Only property is forced in the [TIP](#) page, by preventing all insert, alter and delete commands.

**(7) Buffers:** Here it is possible to specify how much cache the database server should reserve. A good number of buffer pages is 10,000 (based on a 4K page size to allow 40MB cache). The amount of buffers/cache reserved can be viewed in IBExpert here (default = 2,048). If this is increased the database can load considerably more pages. Please refer to [Buffers](#) for details.

[back to top of page](#)

## Active Users page



This page displays those users logged in to the current [database](#) with an open attachment. If an [application](#) has several attachments, or a single user is connected more than once, this is also visible here. This is important should the database need to be shut down at short notice.

The *Active Users* page displayed in the [SQL Assistant](#) even displays the IP addresses of all active users currently logged on to the database (for those databases with the [system table](#), `MON$ATTACHMENTS` (Firebird 2.1 upwards)).

From: <http://ibexpert.com/docu/> - **IBExpert**

Permanent link: <http://ibexpert.com/docu/doku.php?id=02-ibexpert:02-09-ibexpert-services-menu:database-properties>

Last update: **2023/10/18 16:33**

