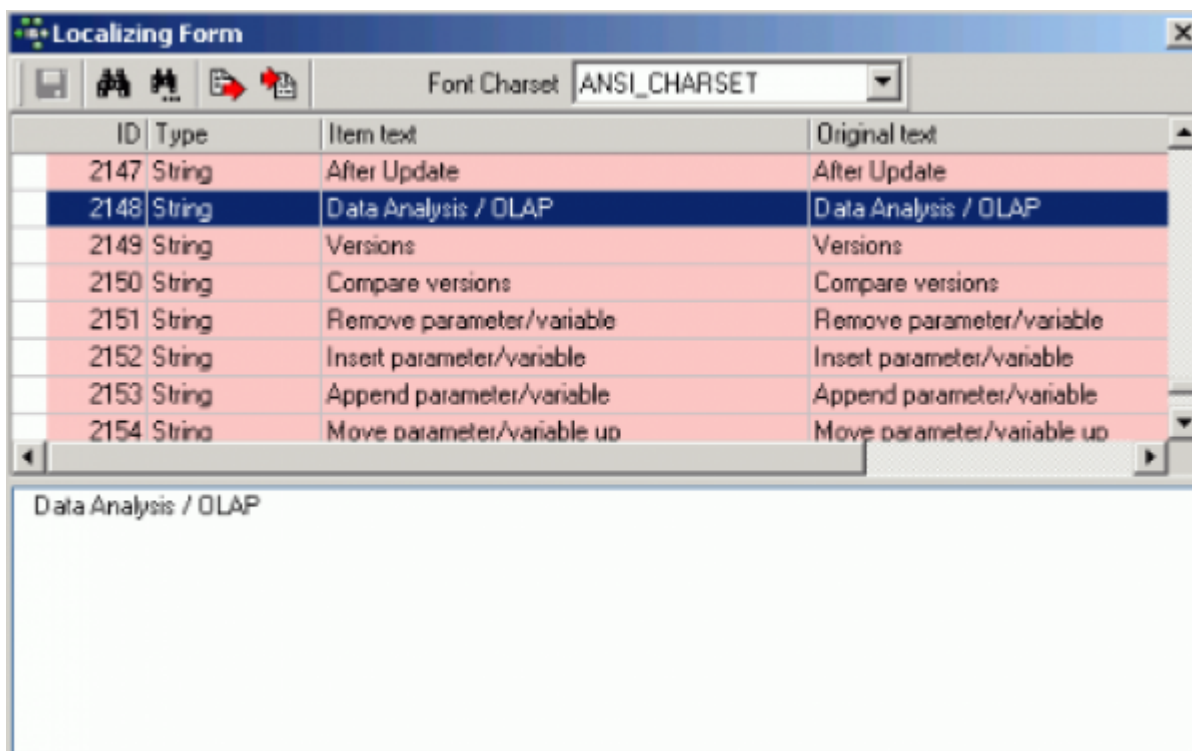


Disable and enable IBEExpert features

Using this feature it is possible to [disable](#) all menu items, and blend only those in, which you wish the user to see. A particularly useful security feature! All you need to do is add a simple [After start script](#), found in the IBEExpert Options menu, [Environment Options](#):

```
execute ibeblock
as
begin
  ibec_DisableFeature(0);      -- disable all
  ibec_EnableFeature(1003);   -- enable Tools menu
  ibec_EnableFeature(2148);   -- enable menuitem tools-data analysis
end
```

The example above enables only the [IBExpert Tools menu](#) item, [Data Analysis](#). The numbers quoted directly after the IBEBlock keyword can be found in the IBEExpert Tools menu, [Localize IBEExpert](#).



To limit the visible parts of IBEExpert for certain users only, add a password clause:

```
execute ibeblock
as
begin
  pwd='';
  if (ibec_InputQuery('Start','Please enter password',pwd))
  then
    if (pwd='123') then
      ibec_enablefeature(0);
    else
      ibec_disablefeature(0);
    end if;
  end if;
end
```

end

From:
<http://ibexpert.com/docu/> - **IBExpert**

Permanent link:
<http://ibexpert.com/docu/doku.php?id=06-ibexpert-ibeblock-examples:disable-and-enable-ibexpert-features>

Last update: **2023/05/26 18:53**

