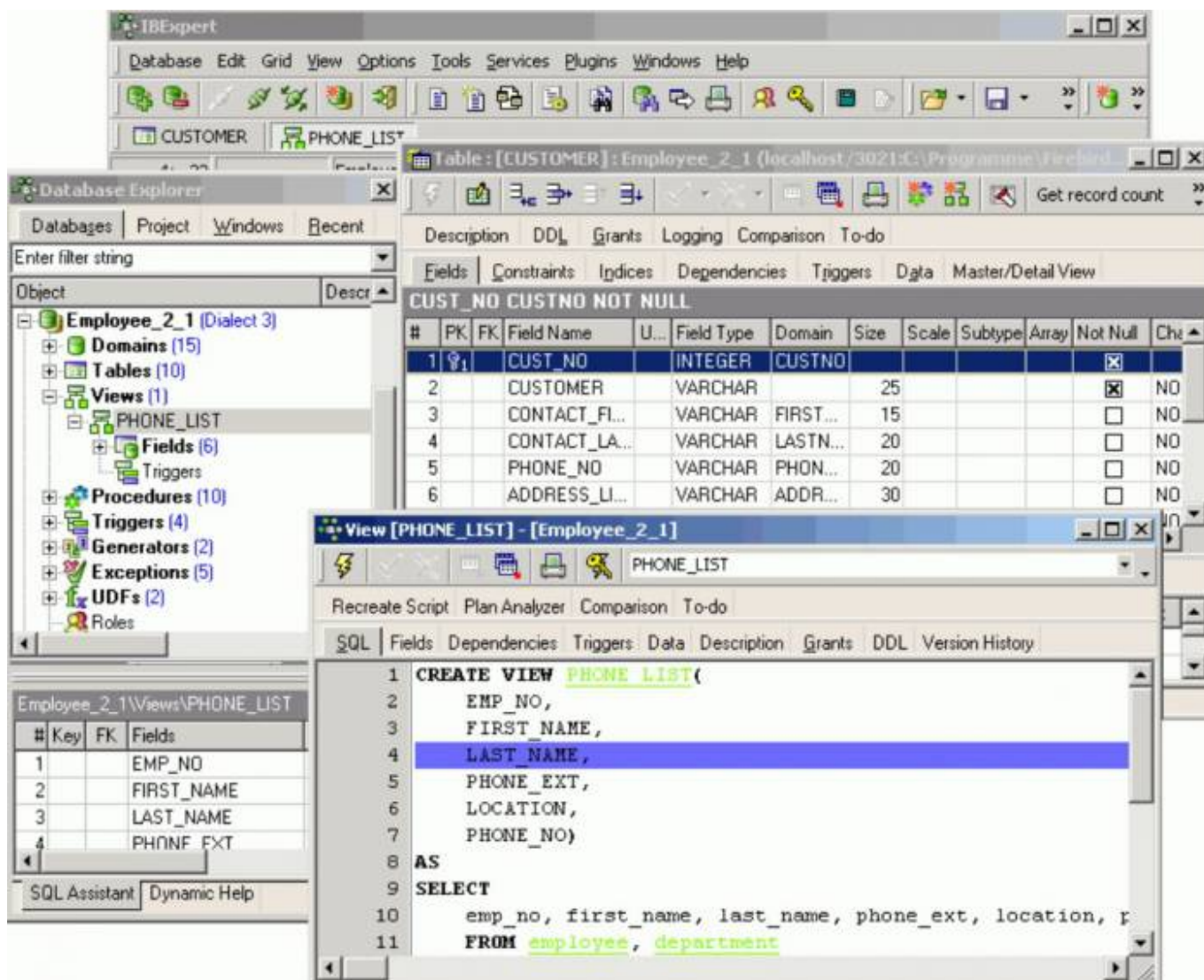


# SDI (Single Document Interface)

SDI is the abbreviation for *Single Document Interface*.



In IBaseExpert this option has the effect that the windows are spread freely and somewhat haphazardly over the screen, similar to Delphi. The [status bar](#) is part of the upper menu and toolbar panel.

*Careful:* it is possible to accidentally move a window totally out of view!

When altering the user interface from SDI to MDI and vice versa, IBaseExpert needs to be restarted for the change to take effect.

From:  
<http://ibexpert.com/docu/> - IBaseExpert

Permanent link:  
<http://ibexpert.com/docu/doku.php?id=01-documentation:01-13-miscellaneous:glossary:single-document-interface>

Last update: 2023/08/18 01:31

