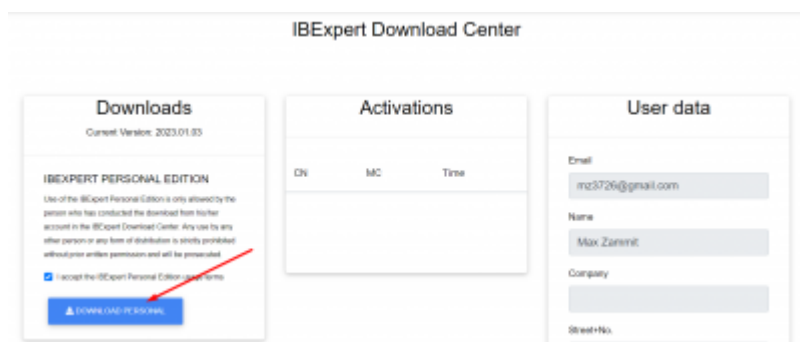


How to Install IBExpert Personal Edition

Use of the IBExpert Personal Edition is only allowed by the person who has conducted the download from his/her account in the IBExpert Download Center. Any use by any other person or any form of distribution is strictly prohibited without prior written permission and will be prosecuted.

(1) Log in to [IBExpert Download Center](#). If you want to register a new account, you can read the guide on how to [Register an account](#)

(2) Read the IBExpert Personal Edition usage terms and if you agree, click on the checkbox and click on DOWNLOAD PERSONAL.



(2) Inside File Explorer, go to Downloads and select setup_personal_2023.exe

(3) A new IBExpert Setup window will pop up with the software's License Agreement. Click on I accept the agreement and click on Next.

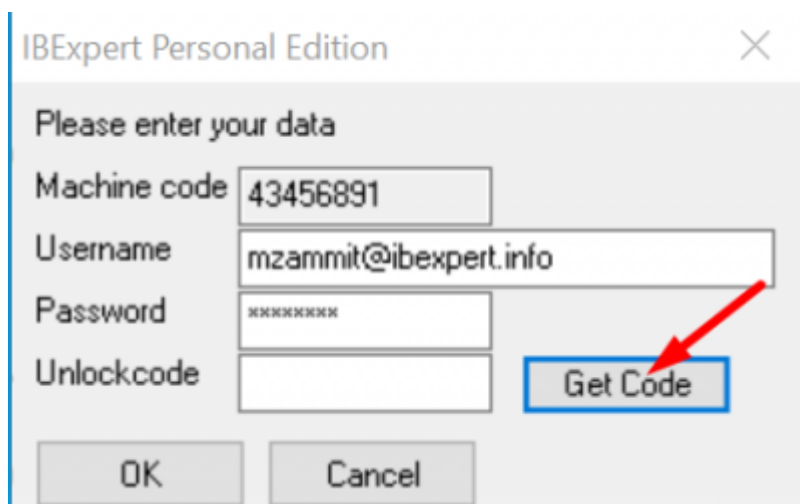
(4) You can change the destination path where the files will be downloaded. Click on Next

(5) In the Select Components, click on Next

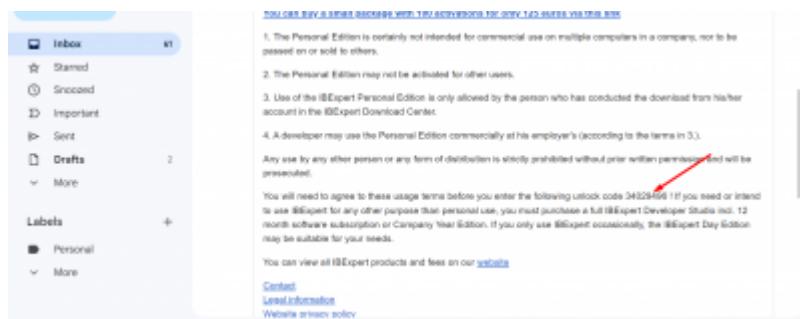
(6) Click on Install and wait for the setup to finish installing IBExpert on your computer.

(7) Leave Launch IBExpert ticked and click on Finish.

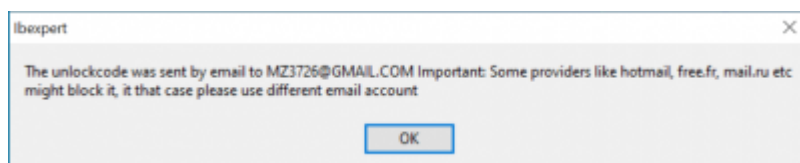
(8) If everything is done correctly, an IBExpert window will pop up. You must enter the email address you registered with IBExpert and the password. If you forgot your password you can read the guide on how to [Change a forgotten password](#)



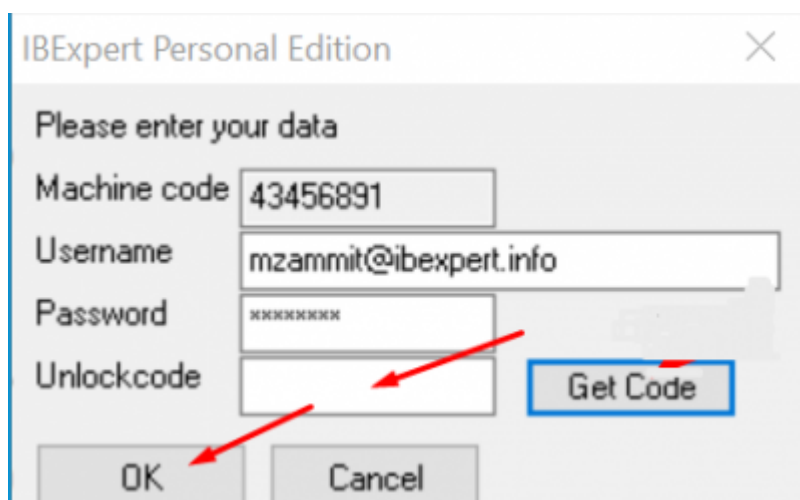
(9) Once you enter your details, click on Get Code and a new window will appear. The code will be sent to the email address specified.



(10) Once you open up your email account, a new email from noreply@ibexpert.com will appear with your unlock code. The code is only allowed to be used by the person who conducted the download from his/her account in the IBCExpert Download Center. **Before using the unlock code, you must agree to the usage terms specified in the email.**



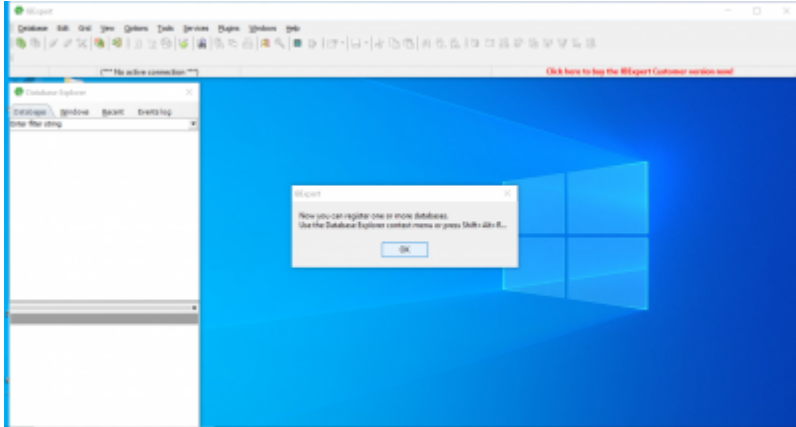
(11) Copy the 8-digit code from the email and **paste it into the Unlock code** tab. Click on OK



If you prefer to have a Single Document Interface, click on Yes. Otherwise, click on No.

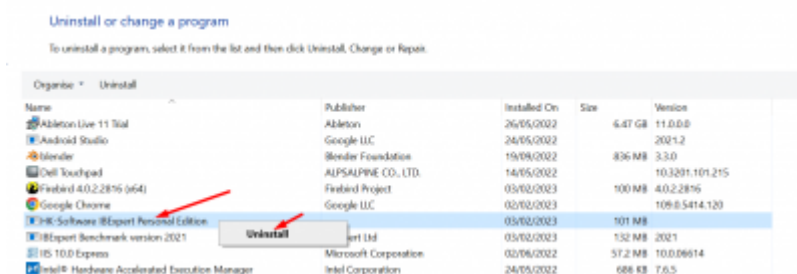
(A single document interface organizes individual windows so that they are handled separately by the operating system's window manager.)

The IBExpert Personal Version is now installed and you can click on OK. You can now Register your first database. You can find out how to (!!create!!) and (!!register!!) a database here

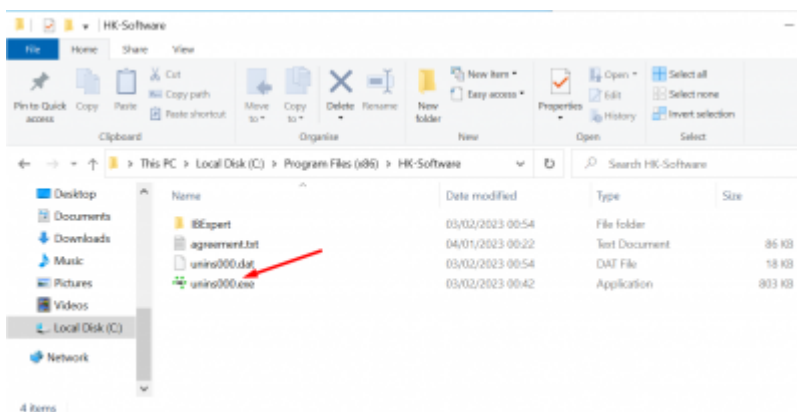


How to Uninstall IBExpert Personal Version

Method 1: In the taskbar, Open up the Control Panel, go to Programs, go to Programs and Features, right-click on HK-Software IBExpert Personal Edition and click on Uninstall.



Method 2: Locate the IBExpert Personal Version folder by going to your Local Disk (c:) > Program Files(x86) > HK-Software. You can run the unins000.exe application and follow the wizard to uninstall



From:
<http://ibexpert.com/docu/> - **IBExpert**

Permanent link:
<http://ibexpert.com/docu/doku.php?id=02-ibexpert:02-01-getting-started:download-install-ibexpert:personal-edition>

Last update: **2023/05/25 03:47**

