

HK-Software Services Control Center

The HK-Software Services Control Center includes the services below using a single user interface. These features are unfortunately not available in the [free IBEExpert Personal Edition](#).

- [IBExpertBackupRestore](#)
- [IBEGbak](#)
- [IBELog and IBELogGUI](#)
- [ufw](#)

Most of the older services are no longer supported, since they are no longer required, especially because newer Firebird versions (since 2.5) have much better internal functionalities which we support in other parts of IBEExpert (for example Monitoring and Trace API replace SQL Monitor and Transaction Monitor services). Please refer to the IBEExpert chapters, [Database Monitoring](#) and [Trace and audit](#) for details.

The [HK-Software Services Control Center \(SCC\)](#) accommodates the new IBExpertBackupRestore service. The IBExpertBackupRestore service has been updated to support all features and switches from the Firebird 3 gbak.exe, and includes complete [IBEGbak](#) functionality as an internal functionality.

The main window can be viewed below:

ibexpert.com services control center

IB Expert the database experts

ibexpert.com services list

- ibexpert.com services
 - IBExpert Backup Restore
 - Task 0
 - Task 1
 - Task 2

Service setup and control | Service runtime info | Performance

DefaultTaskSettings	
_ProcessPriority	Idle
_StatusRefreshInterval	5

Description

ibexpert.com Backup Restore Scheduler Service for Interbase/Firebird

Common service properties

Path to executable:
C:\Program Files (x86)\HK-Software\IBExpert\hkIBRS.exe

Startup type: Manual

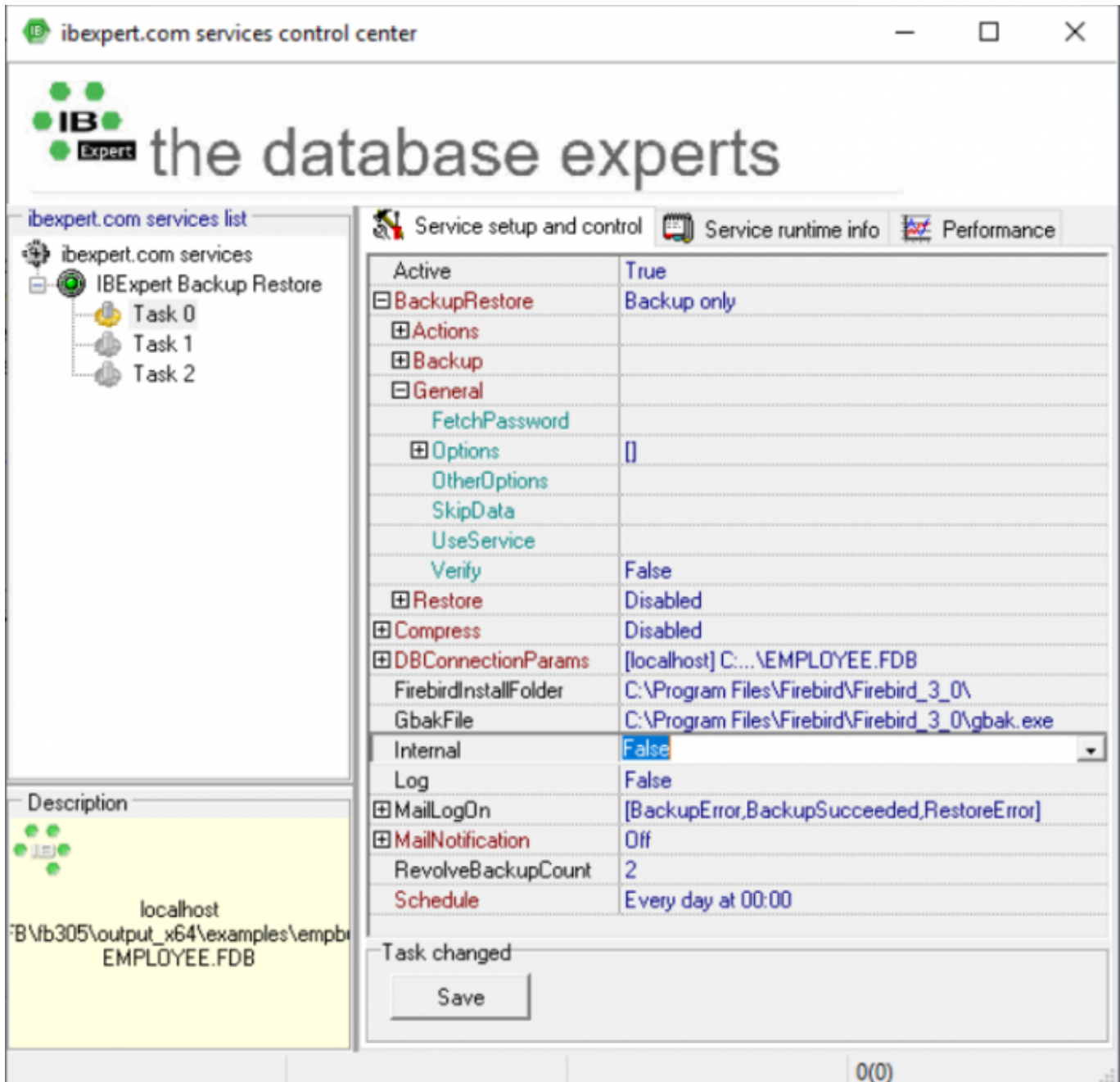
Service status

Service is started

Start Stop

Service is started 0(0)

There are some new options, so to be able to use [IBEGbak](#) as an internal functionality, you need to specify *FirebirdInstallFolder*. Be aware that if you use *Internal*, a log file will NOT be created.



The *Page* control, displayed as three tabs to the right of the services list, is used to set up the selected service and display its runtime information if the service is running.

- **First page:** *Service setup and control* - includes settings and properties of the selected service.
- **Second page:** contains the selected *Service Runtime Info*.
- **Third page:** *Performance* - contains module-specific performance diagrams.

More detailed description of the individual page contents can be found in the module descriptions.

Troubleshooting

Should you experience problems starting the HK Software Services Control Center, please check the following:

1. Have you started the `hkscc.exe` program as Administrator?

2. You may need to manually start the `hkibrs.exe /install` file just once as Administrator in a DOS window, and `hkscc.exe` must also be started as Administrator.
3. Please also check whether you have multiple versions of the `iDLL.dll` file installed. If so, please only use the newest; the current version at the time of writing this is from 14.09.2014. Replace older versions with the new one.
4. If all this does not help, then you should try to completely uninstall all IBExpert versions once again, and back up the directory `%appdata%\HK-Software\IBExpert\`, and then delete the contents. Then install the latest version IBExpert afresh.
5. Please check one last time: there should be no old `hkscc.exe` or `hkibrs.exe` any more on the computer.

From:
<http://ibexpert.com/docu/> - IBExpert

Permanent link:
<http://ibexpert.com/docu/doku.php?id=02-ibexpert:02-09-ibexpert-services-menu:hk-software-services-control-center>

Last update: **2023/10/16 07:49**

