

ibec_DisableFeature

Using this feature it is possible to disable all menu items, and then, using [ibec_EnableFeature](#), to blend only those in which you wish the user to see. A particularly useful security feature!

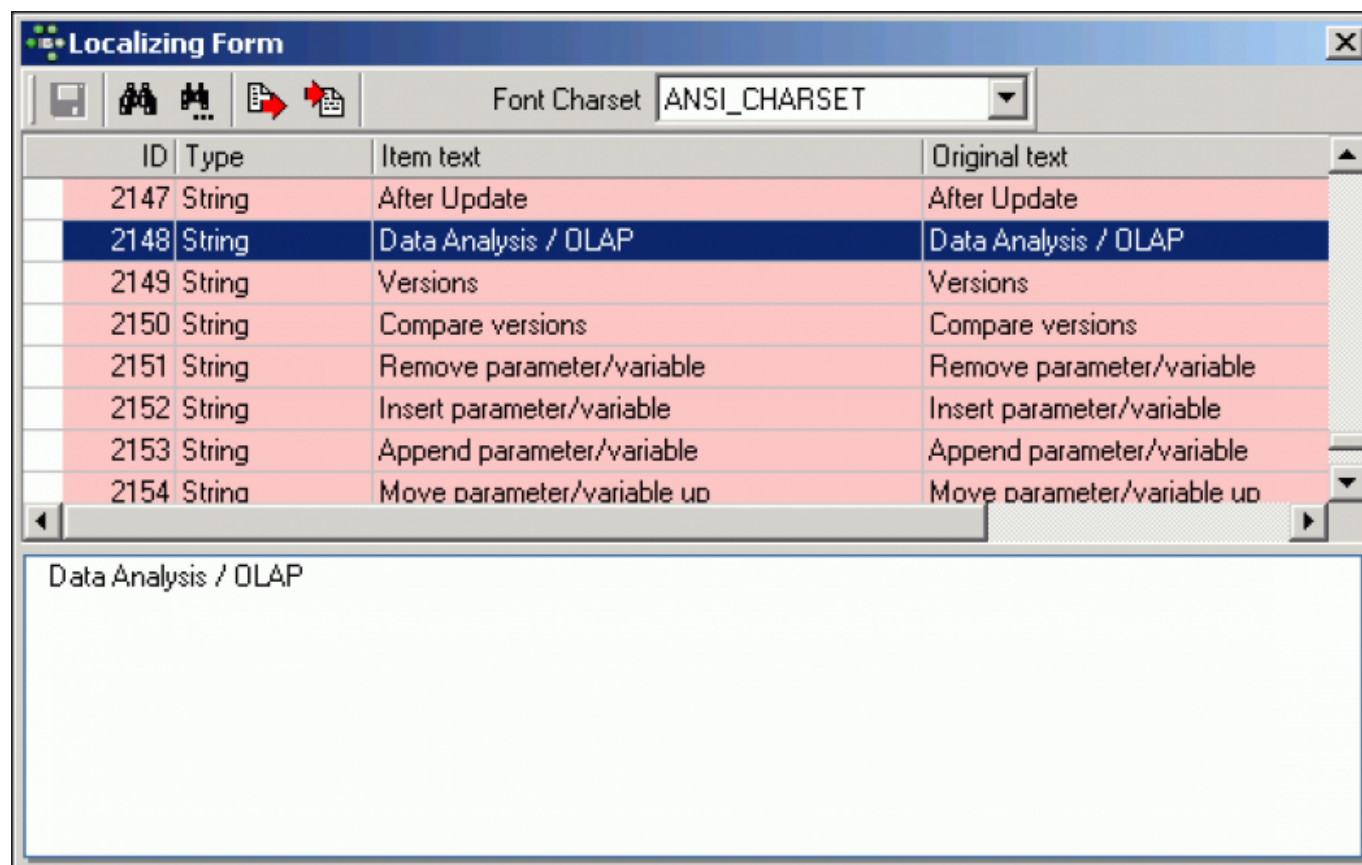
Syntax

```
function ibec_DisableFeature(FeatureID : integer, FALSE);
```

Example

```
execute ibecblock
as
begin
  ibec_DisableFeature(0);    --disable all
  ibec_EnableFeature(1003);  --enable Tools menu
  ibec_EnableFeature(2148);  --enable menuitem tools-data analysis
end
```

The example above enables only the [IBExpert Tools menu](#) item, [Data Analysis](#). The numbers quoted directly after the IBEBlock keyword can be found in the IBExpert Tools menu, [Localize IBExpert](#).



From:
<http://ibexpert.com/docu/> - **IBExpert**

Permanent link:
http://ibexpert.com/docu/doku.php?id=05-ibexpert-ibeblock-functions:05-23-ibexpert-functions:ibec_disablefeature

Last update: **2023/07/06 16:37**

