

ibec_EnableFeature

Using this feature it is possible, after disabling all IBExpert menu items using [ibec_EnableFeature](#), to blend in only those menu items which you wish the user to see. A particularly useful security feature!

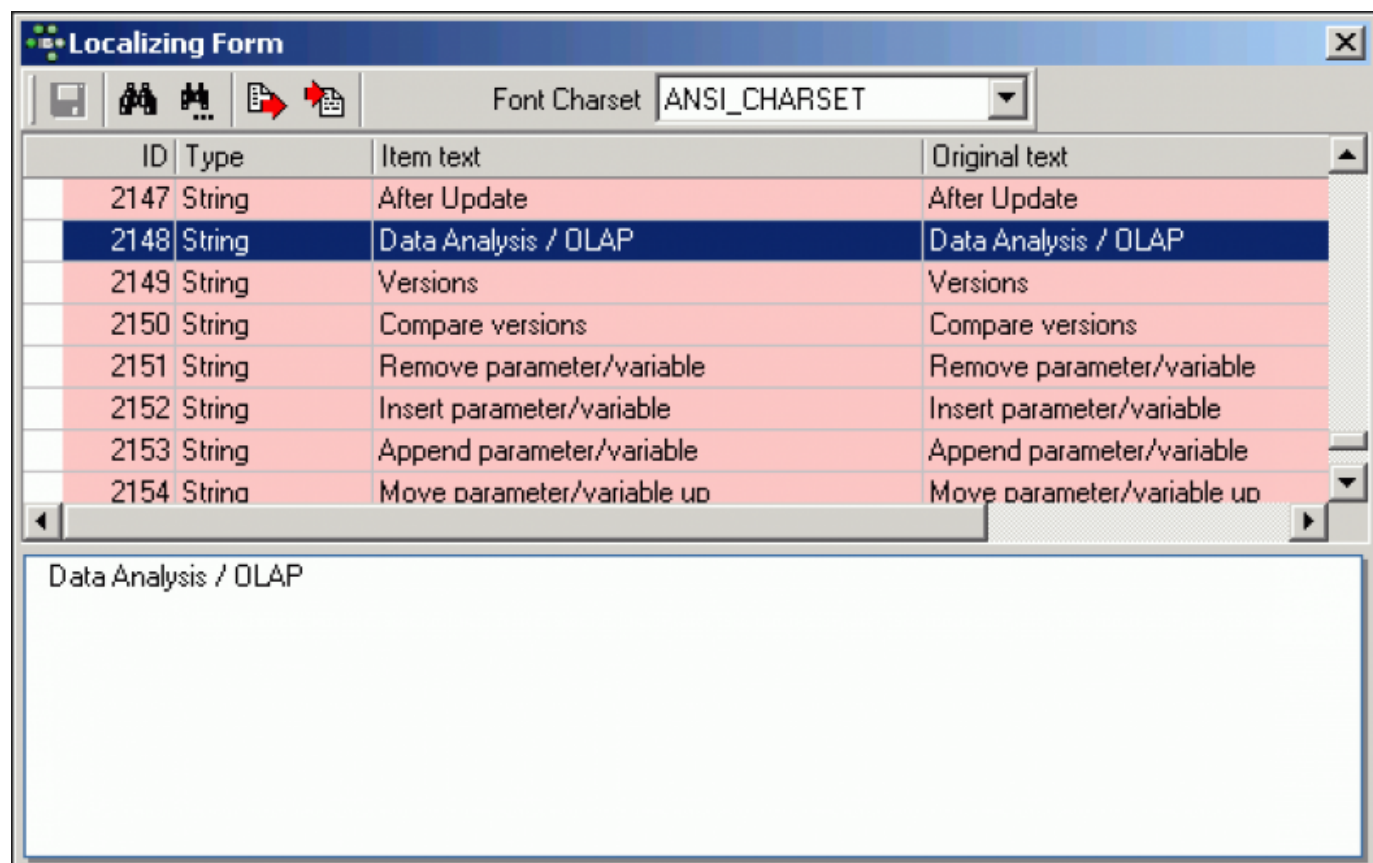
Syntax

```
function ibec_EnableFeature(FeatureID : integer, FALSE);
```

Example

```
execute ibecblock
as
begin
  ibec_DisableFeature(0);      -- disable all
  ibec_EnableFeature(1003);    -- enable Tools menu
  ibec_EnableFeature(2148);    -- enable menu item tools-data analysis
end
```

The example above enables only the [IBExpert Tools menu](#) item, [Data Analysis](#). The numbers quoted directly after the IBEBlock keyword can be found in the IBExpert Tools menu, [Localize IBExpert](#).



From:
<http://ibexpert.com/docu/> - **IBExpert**

Permanent link:
http://ibexpert.com/docu/doku.php?id=05-ibexpert-ibeblock-functions:05-23-ibexpert-functions:ibec_enablefeature

Last update: **2023/07/06 16:38**

